

TM 9-5855-286-24P

TECHNICAL MANUAL

**ORGANIZATIONAL, DIRECT SUPPORT,
AND GENERAL SUPPORT MAINTENANCE
REPAIR PARTS AND SPECIAL TOOLS LIST
INCLUDING DEPOT MAINTENANCE
REPAIR PARTS AND SPECIAL TOOLS**

FOR

**TEST SET,
BORESIGHT COLLIMATOR
TS-3784/TAS
NSN 5855-01-161-8964**

**HEADQUARTERS, DEPARTMENT OF THE ARMY
DECEMBER 1985**

TECHNICAL MANUAL

HEADQUARTERS ,
DEPARTMENT OF THE ARMY
Washington, D. C., 23 December 1985

No. 9-5855-286-24P

Organizational, Direct Support, and General Support Maintenance

Repair Parts and Special Tools List

(Including Depot Maintenance Repair Parts and Special Tools)

FOR

TEST SET, BORESIGHT COLLIMATOR

TS-3784/TAS

NSN 5855-01-161-8964

Current as of 16 September 1985

REPORTING OF ERRORS AND RECOMMENDING IMPROVEMENTS

You can help improve this manual. If you find any mistakes or if you know of a way to improve the procedures, please let us know. Mail your letter, DA Form 2028 (Recommended Changes to Publications and Blank Forms), or DA Form 2028-2 located in back of this manual direct to: Commander, U. S. Army Missile Command, ATTN: AMSMI-LC-ME-pSS, Redstone Arsenal, AL 35898-5238. A reply will be furnished to you.

Table of Contents

		Page	Illus Figure
Section	I. Introduction	1	
	II. Repair parts list	II-1	
Group	0010 Test Set, Boresight Collimator TS-3784/TAS		
	SM-C-772320	II-1	1
	0020 .Test Set Assembly, Boresight Collimator,		
	SM-D-807623 l	II-1	2
	0040 ..Calibration Plate Assembly, SM-D-807590	II-1	3
	0060 ..Optics Assembly, SM-D-807444	II-2	4
	0080 ...Reference Mirror Assembly, SM-D-807443	II-2	5
	0100 ...Fixture Assembly, SM-D-807448	II-3	6
	III. Special tools list (not applicable)		
	IV. Illustrations	IV-1	
	V. NSN, Part No. Index	I-1	

*This manual supersedes the appendix c portion of TM 11-5855-286-14&P dated 31 August 1983.

SECTION I. INTRODUCTION

1. Scope.

This RPSTL lists and authorizes spares and repair parts; special tools; special test, measurement, and diagnostic equipment (TMDE); and other special support equipment required for performance of organizational, direct support, and general support maintenance of the Test Set, Boresight Collimator. It authorizes the requisitioning, issue, and disposition of spares, repair parts and special tools as indicated by the Source, Maintenance and Recoverability (SMR) Codes.

2. General.

In addition to this section, Introduction, this Repair Parts and Special Tools List is divided into the following sections:

a. Section II. Repair Parts List. A list of spares and repair parts authorized by this RPSTL for use in the performance of maintenance. The list also includes parts which must be removed for replacement of the authorized parts. Parts lists are composed of functional groups in ascending alphanumeric sequence, with the parts in each group listed in ascending figure and item number sequence. Bulk materials are listed in item name sequence.

b. Section III. Special Tools List. Not applicable.

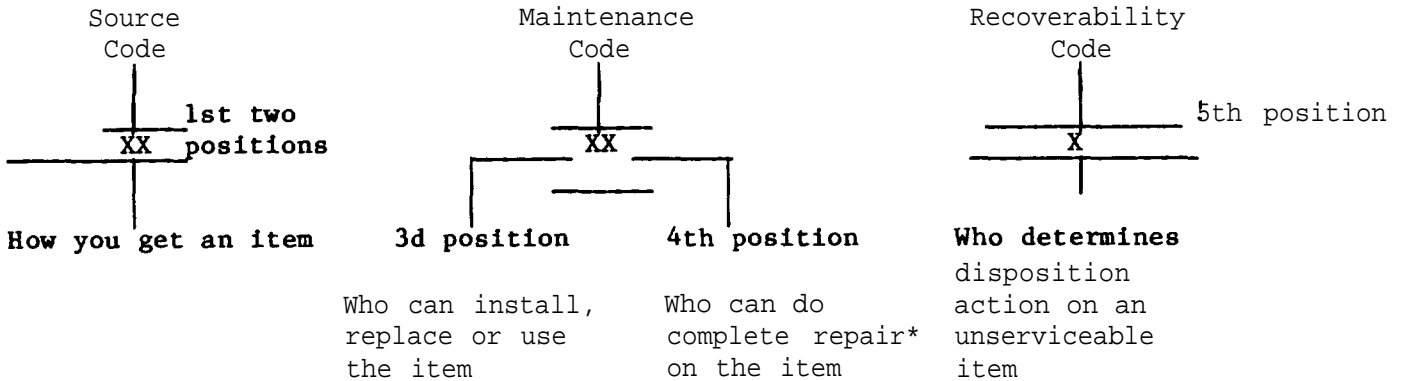
c. Section IV. Illustrations. A series of exploded views of assemblies and subassemblies arranged in functional group and figure number sequence. All exploded parts are identified with callout numbers placed in clockwise sequence. These exploded views reflect repair parts plus those parts which must be removed in the process of disassembly for replacement or repair of the authorized item.

d. Section V. National Stock Number and Part Number Index. A list, in National item identification number (NIIN) sequence, of all National stock numbered items appearing in the listing, followed by a list in alphanumeric sequence of all part numbers appearing in the listing. National stock numbers and part numbers are cross-referenced to each illustration figure and item number appearance.

3. Explanation of Columns (Sections II and III).

a. ITEM NO. (Column (1)). Indicates the number used to identify items called out in the illustration.

b. SMR CODE (Column (2)). The Source, Maintenance, and Recoverability (SMR) Code is a 5-position code containing supply/requisitioning information, maintenance category authorization criteria, and disposition instruction, as shown in the following breakout:



*Complete Repair: Maintenance capacity, capability, and authority to perform all corrective maintenance tasks of the "Repair" function in a use/user environment in order to restore serviceability to a failed item.

(1) Source Code. The source code tells you how you get an item needed for maintenance, repair, or overhaul of an end item/equipment. Explanations of source codes follow:

Code	Explanation
PA	Stocked items; use the applicable NSN to request/requisition items with these source codes. They are authorized to the category indicated by the code entered in the 3d position of the SMR Code.
PB	
PC**	
PD	
PE	
PF	**NOTE: Items coded PC are subject to deterioration.
PG	
KD	Items with these codes are not to be requested/requisitioned individually. They are part of a kit which is authorized to the maintenance category indicated in the 3d position of the SMR Code. The complete kit must be requisitioned and applied.
KF	
KB	

MO-(Made at Org/ AVUM Level)	Items with these codes are not to be requested/requisitioned individually. They must be made from bulk material which is identified by part number in the DESCRIPTION AND USABLE ON CODE (UOC) column and listed in the Bulk Material group of the repair parts list in this RPSTL. If the item is authorized to you by the 3d position code of the SMR Code, but the source code indicates it is msde at a higher level, order the item from the higher level of maintenance.
MF-(Made at DS/ AVIM Level)	
MH-(Made at GS Level)	
ML-(Made at Spe cialized Re pair Act (SRA)	
MD-(Made at Depot)	

Code	Explanation
AO-(Assembled by Org/AVUM Level)	Items with these codes are not to be requested/requisitioned individually. The parts that make up the assembled item must be requisitioned or fabricated and assembled at the level of maintenance indicated by the source code. If the 3d position code of the SMR Code authorizes you to replace the item, but the source code indicates the item is assembled at a higher level, order the item from the higher level of maintenance.
AF-(Assembled by DS/AVIM Level)	
AH-(Assembled by GS Level)	
AL-(Assembled by SRA)	
AD-(Assembled by Depot)	

XA - Do not requisition an "xA"-coded item. Order its next higher assembly. (Also, refer to the NOTE below.)

XB - If an "XB" item is not available from salvage, order it using the FSCM and part number given.

xc - Installation drawing, diagram, instruction sheet, field service drawing, that is identified by manufacturer's part number.

XD - Item is not stocked. Order an "XD"-coded item through normal supply channels using the FSCM and part number given, if no NSN is available.

NOTE : Cannibalization or controlled exchange, when authorized, may be used as a source of supply for items with the above source codes, except for those source coded "XA" or those aircraft support items restricted by requirements of AR 700-42.

(2) Maintenance Code. Maintenance codes tell you the level(s) of maintenance authorized to USE and REPAIR support items. The maintenance codes are entered in the third and fourth positions of the SMR Code as follows:

(a) The maintenance code entered in the third position tells you the lowest maintenance level authorized to remove, replace, and use an item. The maintenance code entered in the third position will indicate authorization to one of the following levels of maintenance.

Code	Application/Explanation
C	- Crew or operator maintenance done within organizational or aviation unit maintenance.
O	- Organizational or aviation unit level can remove, replace and use the item.
F	- Direct support or aviation intermediate level can remove, replace, and use the item.
H	- General support level can remove, replace, and use the item.
L	- Specialized repair activity can remove, replace, and use the item.

Code	Application/Explanation
------	-------------------------

D	- Depot level can remove, replace, and use the item.
---	--

(b) The maintenance code entered in the fourth position tells whether or not the item is to be repaired and identifies the lowest maintenance level with the capability to do complete repair (i.e., perform all authorized repair functions). (NOTE : Some limited repair may be done on the item at a lower level of maintenance, if authorized by the Maintenance Allocation Chart (MAC) and SMR Codes.) This position will contain one of the following maintenance codes.

Code	Application/Explanation
------	-------------------------

O	- Organizational or aviation unit is the lowest level that can do complete repair of the item.
---	--

F	- Direct support or aviation intermediate is the lowest level that can do complete repair of the item.
---	--

H	- General support is the lowest level that can do complete repair of the item.
---	--

L	- Specialized repair activity (designate the specialized repair activity) is the lowest level that can do complete repair of the item.
---	--

D	- Depot is the lowest level that can do complete repair of the item.
---	--

Z	- Nonreparable. No repair is authorized.
---	--

B	- No repair is authorized. (No parts or special tools are authorized for the maintenance of a 'B" coded item). However, the item may be reconditioned by adjusting, lubricating, etc., at the user level.
---	---

(3) Recoverability Code. Recoverability codes are assigned to items to indicate the disposition action on unserviceable items. The recoverability code is entered in the fifth position of the SMR Code as follows:

Recoverability Codes	Application/Explanation
----------------------	-------------------------

Z	- Nonreparable Item. When unserviceable, condemn and dispose of the item at the level of maintenance shown in 3d position of SMR Code.
---	--

O	- Repairable item. When uneconomically repairable, condemn and dispose of the item at organizational or aviation unit level.
---	--

F	- Repairable item. When uneconomically repairable, condemn and dispose of the item at the direct support or aviation intermediate level.
---	--

Recoverability Codes	Application/Explanation
H	- Reparable item. When uneconomically reparable, condemn and dispose of the item at the general support level.
D	- Reparable item. When beyond lower level repair capability, return to depot. Condemnation and disposal of item not authorized below depot level.
L	- Reparable item. Condemnation, and disposal not authorized below specialized repair activity (SRA).
A	- Item requires special handling or condemnation procedures because of specific reasons (e.g., precious metal content, high dollar value, critical material, or hazardous material). Refer to appropriate manuals/directives for specific instructions.

c. FSCM (Column (3)). The Federal Supply Code for Manufacturer (FSCM) is a 5-digit numeric code which is used to identify the manufacturer, distributor, or Government agency, etc., that supplies the item.

d. PART NUMBER (Column (4)). Indicates the primary number used by the manufacturer (individual, company, firm, corporation, or Government activity), which controls the design and characteristics of the item by means of its engineering drawings, specifications standards, and inspection requirements to identify an item or range of items.

NOTE : When you use an NSN to requisition an item, the item you receive may have a different part number from the part ordered.

e. DESCRIPTION AND USABLE ON CODE (UOC) (Column (5)). This column includes the following information:

(1) The Federal item name and, when required, a minimum description to identify the item.

(2) Part numbers for bulk materials are referenced in this column in the line item entry for the item to be manufactured/fabricated.

(3) The USABLE ON CODE, when applicable (see paragraph 5, Special Information).

f. QTY (column (6)). The QTY (quantity per figure column) indicates the quantity of the item used in the breakout shown on the illustration figure, which is prepared for a functional group, subfunctional group, or an assembly. A "V" appearing in this column in lieu of a quantity indicates that the quantity is variable and the quantity may vary from application to application.

4. Explanation of Columns (Sect. V).

a. NATIONAL STOCK NUMBER (NSN) INDEX.

(1) STOCK NUMBER column. This column lists the NSN by National item identification number (NIIN) sequence. The NIIN consists of the last nine digits of the NSN (i.e., 5305-01-574-1467). When using this column to locate an item, ignore the first 4 digits of NSN. However, the complete NSN should be used when ordering items by stock number.

(2) FIG. column. This column lists the number of the figure where the item is identified/located. The figures are in numerical order in Section II.

(3) ITEM column. The item number identifies the item associated with the figure listed in the adjacent FIG. column. This item is also identified by the NSN listed on the same line.

b. PART NUMBER INDEX. Part numbers in this index are listed by part number in ascending alphanumeric sequence (i.e., vertical arrangement of letter and number combination which places the first letter or digit of each group in order A through Z, followed by the numbers 0 through 9 and each following letter or digit in like order).

(1) FSCM column. The Federal Supply Code for Manufacturer (FSCM) is a 5-digit numeric code used to identify the manufacturer, distributor, or Government agency, etc., that supplies the item.

(2) PART NUMBER column. Indicates the primary number used by the manufacturer (individual, firm, corporation, or Government activity), which controls the design and characteristics of the item by means of its engineering drawings, specifications standards, and inspection requirements to identify an item or range of items.

(3) STOCK NUMBER column. This column lists the NSN for the associated part number and manufacturer identified in the PART NUMBER and FSCM columns to the left.

(4) FIG. column. This column lists the number of the figure where the item is identified/located in Section II and III.

(5) ITEM column. The item number is that number assigned to the item as it appears in the figure referenced in the adjacent figure number column.

5. Special Information.

a. INDEX NUMBERS. Items which have the word BULK in the figure column will have an index number shown in the item number column. This index number is a cross-reference between the National Stock Number/Part Number Index and the bulk material list in Section II.

b. ASSOCIATED PUBLICATIONS. The publications(s) listed below pertain to Test Set, Boresight Collimator and its components:

TM 9-5855-286-14

c. For requisitioning miscellaneous consumable maintenance supplies or expendable supplies, use CTA 50-970.

d. National stock numbers (NSN) that are missing for "P" source coded items have been applied for and will be added to this manual by a change/revision when they are entered in the Army Master Data File (AMDF). Until the NSN'S are established and published, submit exception requisitions to: Commander, U.S. Army Missile Command, ATTN: AMSMI-LC-MM, Redstone Arsenal, AL 35898-5239.

6. How to Locate Repair Parts.

a. When National Stock Number or Part Number is Not Known.

(1) First. Using the table of contents, determine the assembly group or subassembly group to which the item belongs. This is necessary since figures are prepared for assembly groups and subassembly groups, and listings are divided into the same groups.

(2) Second. Find the figure covering the assembly group or subassembly group to which the item belongs.

(3) Third. Identify the item on the figure and note the item number.

(4) Fourth. Refer to the Repair Parts List for the figure to find the part number for the item number noted on the figure.

(5) Fifth. Refer to the Part Number Index to find the NSN, if assigned.

b. When National Stock Number or Part Number is Known:

(1) First. Using the Index of National Stock Numbers and Part Numbers, find the pertinent National Stock Number or Part Number. The NSN index is in National Item Identification Number (NIIN) sequence (see 4.a(1)). The part numbers in the Part Number Index are listed in ascending alphanumeric sequence (see 4.b). Both indexes cross-reference you to the illustration figure and item number of the item you are looking for.

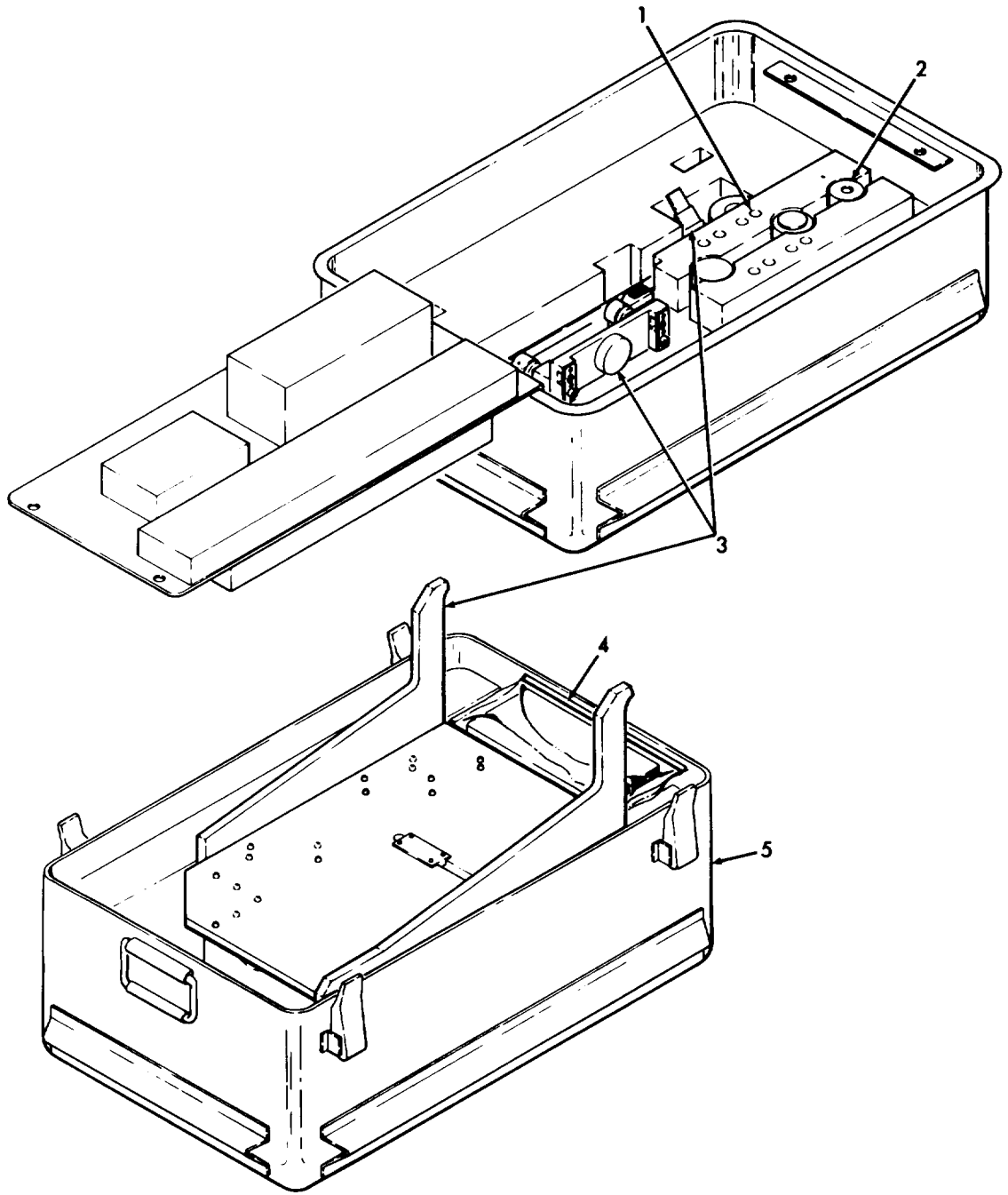
(2) Second. After finding the figure and item number, verify that the item is the one you're looking for, then locate the item number in the repair parts list for the figure.

7. Abbreviations. Not Applicable.

SECTION II		TM9-5855-286-24P				
(1)	(2)	(3)	(4)	(5)	(6)	
ITEM NO	SMR CODE	FSCM	PART NUMBER	DESCRIPTION AND USABLE ON CODE (UOC)	QTY	
GROUP 0010 FIG. 1						
TEST SET, BORESIGHT COLLIMATOR						
TS-3784/TAS						
SM-C-772320 (80063)						
1	PAOZZ	80063	SM-C-808825	LAMP, INCANDESCENT	8	
2	PAOZZ	80063	SM-C-807454	WRENCH, SPANNER	1	
3	XAFDD	80063	SM-D-807623	TEST SET, BORESIGHT (FOR PARTS SEE FG 0020)	1	
4	PAOZZ	80063	SM-C-804737-2	BAG, PLASTIC	1	
5	PBOZZ	80063	SM-D-807608-1	CASE, BORESIGHT COLL	1	
GROUP 0020 FIG. 2						
TEST SET ASSEMBLY,						
BORESIGHT COLLIMATOR						
SM-D-807623 (80063)						
1	XDODD	80063	SM-D-807444	OPTICS ASSEMBLY (FOR PARTS SEE FG 0060)	1	
2	PAFDD	80063	SM-C-806905-1	AUTOCOLLIMATOR	1	
3	PAFZZ	80063	SM-C-808826	CAP, BARREL	1	
4	PAFZZ	80063	SM-C-969101	CORD ASSY, POWER SUP	1	
5	PAFZZ	80063	SM-C-808837	CAP, LAMP HOUSING	1	
6	PAFZZ	80063	SM-C-808838-1	LAMP HOLDER	1	
7	PAFZZ	80063	SM-C-808825	LAMP, INC ANDESCENT	1	
8	PAOFF	80063	SM-D-807590	CALIBRATION PLATE A (FOR PARTS SEE FG 0040)	1	
9	XDDZZ	80063	SM-C-806793-6	PLATE, ID	1	
GROUP 0040 FIG. 3						
CALIBRATION PLATE ASSEMBLY						
SM-D-807590 (80063)						
1	XDFZZ	80063	SM-C-772435-2	HANDLE, LATCH, RIGHT	1	
2	XDFZZ	80063	SM-D-806867	SHAFT, LATCH	2	
3	PAFZZ	96906	MS16555-634	PIN, STRAIGHT, HEADLE	2	
4	PAFZZ	96906	MS16555-643	PIN, STRAIGHT, HEADLE	2	
5	XDFZZ	80063	SM-C-772474-2	HANDLE, LATCH, LEFT	1	
6	PAFZZ	80063	SM-C-804662-2	WASHER, SPRING TENSI	20	
7	XDFZZ	80063	SM-C-772752	CUP, SPRING	2	
8	PAFZZ	80063	SM-C-773540-21	SPRING, HELICAL, COMP	2	
9	PAFZZ	96906	MS51959-22B	SCREW, MACHINE	8	
10	XDFZZ	80063	SM-C-807552	SPACER, PLATE	2	
11	XDFZZ	80063	SM-D-807546	PLATE, CALIBRATION	1	
12	PAFZZ	80063	SM-C-808745	PAD, WEAR, LEFT	1	
13	PAFZZ	96906	MS51959-13B	SCREW, MACHINE	4	
14	PAFZZ	80063	SM-C-808746	PAD, WEAR, RIGHT	1	

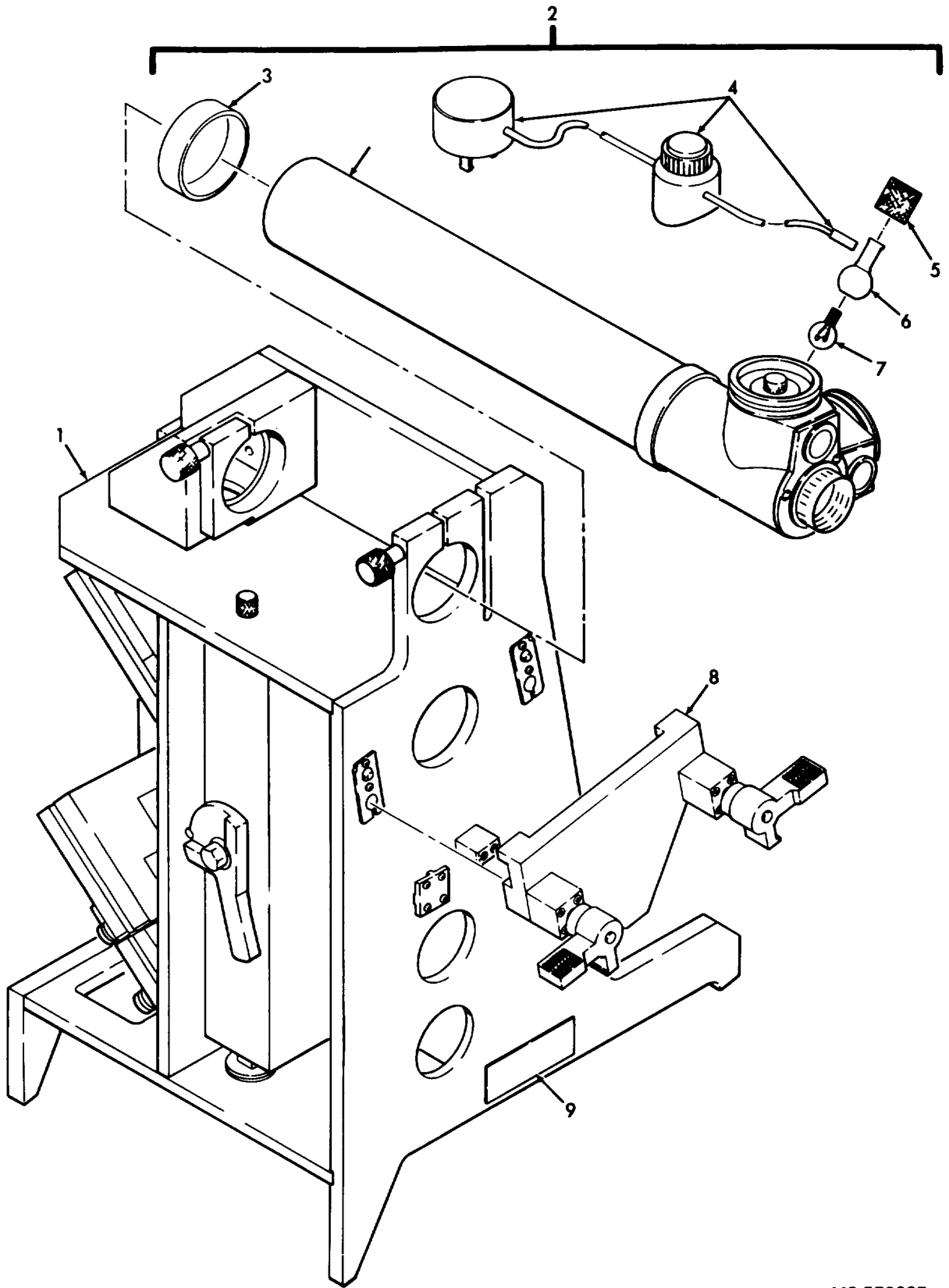
SECTION II		TM9-5855-286-24P				(6)
(1)	(2)	(3)	(4)	(5)		(6)
ITEM	SMR		PART			
NO	CODE	FSCM	NUMBER	DESCRIPTION AND USABLE ON CODE (UOC)		QTY
GROUP 0060 FIG. 4						
OPTICS ASSEMBLY						
SM-D-807444 (80063)						
1	PAFDD	80063	SM-D-807478-1	FIXED MIRROR MOUNT		1
2	PAFZZ	80063	SM-C-807481	SCREW, SHOULDER		1
3	PAFZZ	96906	MS15795-808B	WASHER, FLAT		1
4	PADZZ	80063	SM-C-807109-1	MIRROR, FRONT SURF		1
5	XDDZZ	80063	SM-D-807468	MOUNT, FIXED MIRROR		1
6	XDFFF	80063	SM-D-807448	FIXTURE ASSEMBLY (FOR PARTS SEE FG 0100)		1
7	PAFZZ	96906	MS15795-806B	WASHER, FLAT		3
8	PAFZZ	96906	MS35338-136B	WASHER, LOCK		3
9	PAFZZ	96906	MS51957-33B	SCREW, MACHINE		3
10	PAFZZ	96906	MS15795-807B	WASHER, FLAT		12
11	PAFZZ	96906	MS35338-137B	WASHER, LOCK		12
12	PAFZZ	96906	MS51957-48B	SCREW, MACHINE		12
13	PAFDD	80063	SM-D-807443	REF MIRROR ASSY (FOR PARTS SEE FG 0080)		1
14	PAFDD	80063	SM-D-807588	GLLD MIRROR ASSY		1
15	PAFZZ	80063	SM-C-807589	MIRROR ADJ ASSEMBLY		2
16	PAFZZ	96906	MS51957-49B	SCREW, MACHINE		2
17	PAFZZ	80063	SM-C-807535	SCREW		1
18	PAFZZ	96906	MS35338-139B	WASHER, LOCK		1
19	PAFZZ	96906	MS15795-810B	WASHER, FLAT		1
20	XDFZZ	80063	SM-D-807540	SUPPORT, ADJUSTER, GL		1
21	PBFDD	80063	SM-C-807593	FRAME ASSY, GLLD		1
22	XDDZZ	80063	SM-D-807542	FRAME, MIRROR, GLLD		1
23	PADZZ	80063	SM-C-807550	MIRROR, TOW, GLLD, TS		1
24	PAFZZ	83553	C0420-055-0500M	SPRING, HELICAL, COMP		2
25	PDFDD	80063	SM-D-807587	TOW MIRROR ASSY		1
26	XDFZZ	80063	SM-D-807544	SUPPORT, ADJUSTER		1
27	PBFDD	80063	SM-C-807592	FRAME ASSY, TOW		1
28	XDDZZ	80063	SM-C-807541	FRAME, MIRROR, TOW		1
29	PAFDD	80063	SM-D-807586	SPLIT MIRROR ASSY		1
30	PAFZZ	80063	SM-D-807543	MIRROR ADJ ASSEMBLY		1
31	PDFDD	80063	SM-C-807591	FRAME ASSY, SPLIT		1
32	PADZZ	80063	SM-C-807549	MIRROR, SPLIT, TS		1
33	XDDZZ	80063	SM-D-807545	FRAME, MIRROR, SPLIT		1
GROUP 0080 FIG. 5						
REFERENCE MIRROR ASSEMBLY						
SM-D-807443 (80063)						
1	XDDDD	80063	SM-D-807440	HOUSING, REF MIRROR		1
2	PADZZ	80063	SM-C-807467	PIVOT, TAPERED		2
3	XDFZZ	80063	SM-C-807636	PLATE, INFORMATION		1
4	XDDZZ	80063	SM-C-807476	HANDLE, LOCK		1

SECTION II		TM9-5855-286-24P				
(1)	(2)	(3)	(4)	(5)		(6)
ITEM	SMR		PART			
NO	CODE	FSCM	NUMBER	DESCRIPTION AND USABLE ON CODE (UOC)		QTY
5	XDDZZ	80063	SM-C-807466	PIVOT,HANDLE		1
6	PADZZ	80063	SM-D-807442	MIRROR,REF FLAT		1
7	PADZZ	80063	SM-C-773540-44	SPRING,HELICAL		1
8	XDFZZ	80063	SM-C-807548	CUSHION,CLAMP		3
9	PADZZ	96906	MS51957-17B	SCREW,MACHINE		6
10	PADZZ	96906	MS35338-135B	WASHER,LOCK		6
11	PADZZ	96906	MS15795-804B	WASHER,FLAT		6
12	PADZZ	80063	SM-C-807547	CLAMP,REF MIRROR		3
13	PADZZ	96906	MS16633-4025	RING,RETAINING		1
14	XDDZZ	80063	SM-C-807465	PIN,LATCH		1
GROUP 0100 FIG. 6						
FIXTURE ASSEMBLY						
SM-D-807448 (80063)						
1	XDFZZ	80063	SM-D-807584	WELDMENT ASSEMBLY		1
2	PAFZZ	80063	SM-C-804648	SCREW		1
3	XDFZZ	80063	SM-C-807469	RECEPTACLE SHAFT 1		1
4	PAFZZ	96906	MS15795-804B	WASHER,FLAT		10
5	PAFZZ	96906	MS35338-135B	WASHER,LOCK		8
6	PAFZZ	96906	MS51957-15B	SCREW,MACHINE		8
7	PAFZZ	80063	SM-C-806870	PAD,AFOCAL,LEFT		1
8	XDFZZ	80063	SM-C-806868	SCREW,AFOCAL BSC		2
9	PAFZZ	96906	MS51959-12B	SCREW,MACHINE		4
10	PAFZZ	96906	MS51957-13B	SCREW,MACHINE		4
11	PAFZZ	80205	NAS620C3	WASHER,FLAT		4
12	XDFZZ	80063	SM-C-772550	PLATE,WEAR,LEFT		1
13	PAFZZ	80063	SM-C-806871	PAD,AFOCAL,RIGHT		1
14	XDFZZ	80063	SM-C-807451	PAD,MOUNT		1
15	PAFZZ	96906	MS51959-20B	SCREW,MACHINE		2
16	XDFZZ	80063	SM-C-807470	RECEPTACLE SHAFT 2		1
17	XDFZZ	80063	SM-C-772509	PLATE,WEAR,RIGHT		1
18	PAFZZ	88044	AN316C8R	NUT,PLAIN,HEXAGON		1
19	PAFZZ	96906	MS35338-143	WASHER,LOCK		1
20	PAFZZ	96906	MS15795-818	WASHER,FLAT		1
21	PAFZZ	96906	MS16995-11B	SCREW,CAP,SOCKET HE		2
22	XDFZZ	80063	SM-C-772448-7	CLAMP,RIM,CLINCHING		2
23	PAFZZ	80063	SM-C-804647	PIVOT,ECCENTRIC,COA		1
24	XDFZZ	80063	SM-C-807426	SUPPORT,SCREW,ECCEN		1
25	PAFZZ	80063	SM-C-772968-13	SCREW,SHOULDER		3
26	XDFZZ	80063	SM-C-772660-2	WASHER,SPRING TENS		6
27	PAFZZ	96906	MS15795-810B	WASHER,FLAT		3
28	XDFZZ	80063	SM-C-807455	BAFFLE,OPTICS		3
29	PAFZZ	80063	SM-C-807461	SCREW		1
30	P•AFZZ	81350	AN316-C6R	NUT,PLAIN,HEXAGON		1
31	PAFZZ	96906	MS35338-141	WASHER,LOCK		1
32	PAFZZ	96906	MS15795-815	WASHER,FLAT		1
33	PAFZZ	80063	SM-C-807481	SCREW,SHOULDER		1
34	PAFZZ	96906	MS15795-808	WASHER,FLAT		1



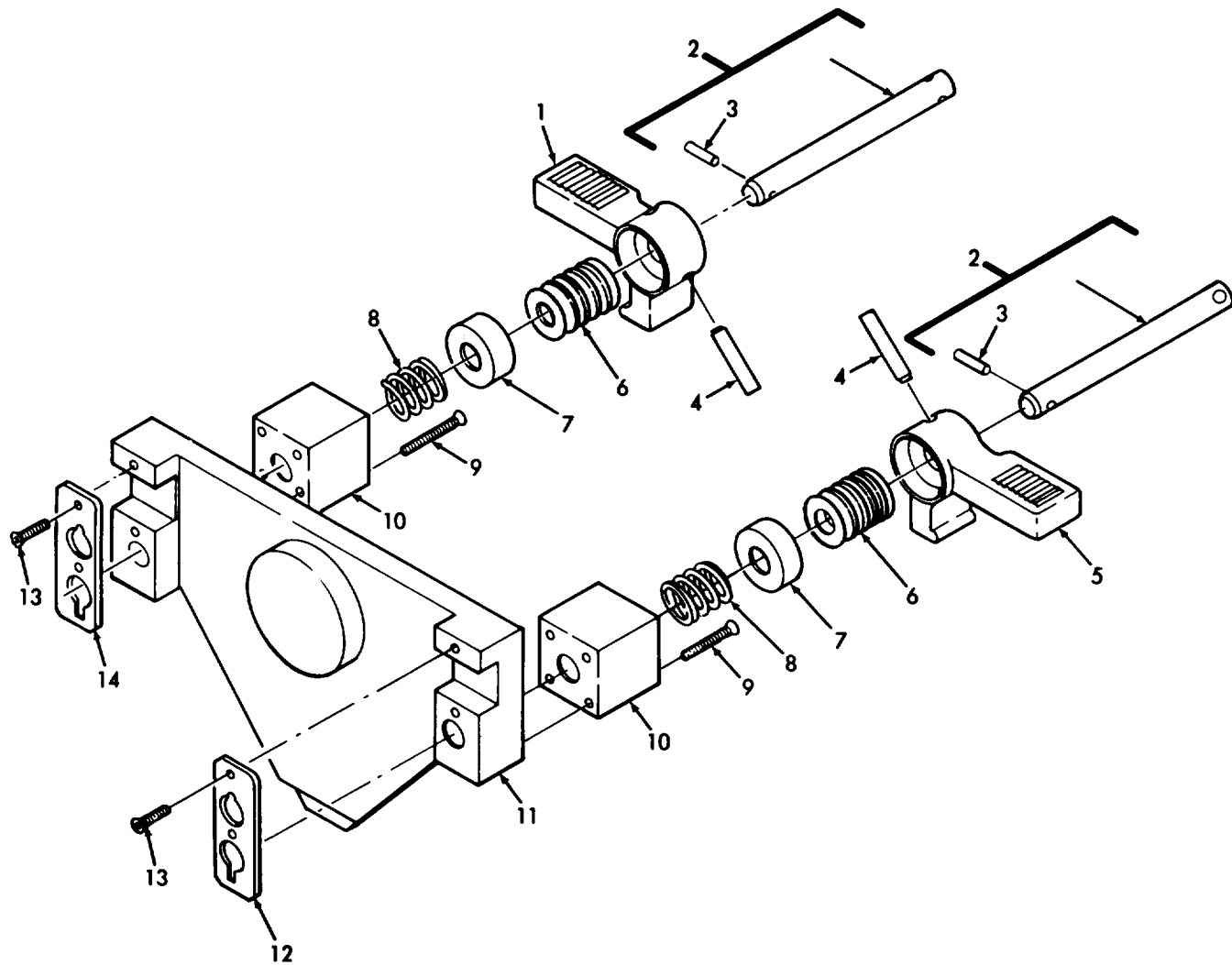
MS 570236

Figure 1. Test set, foresight collimator TS-3784/TAS (SM-C-772320) (Group 0010)



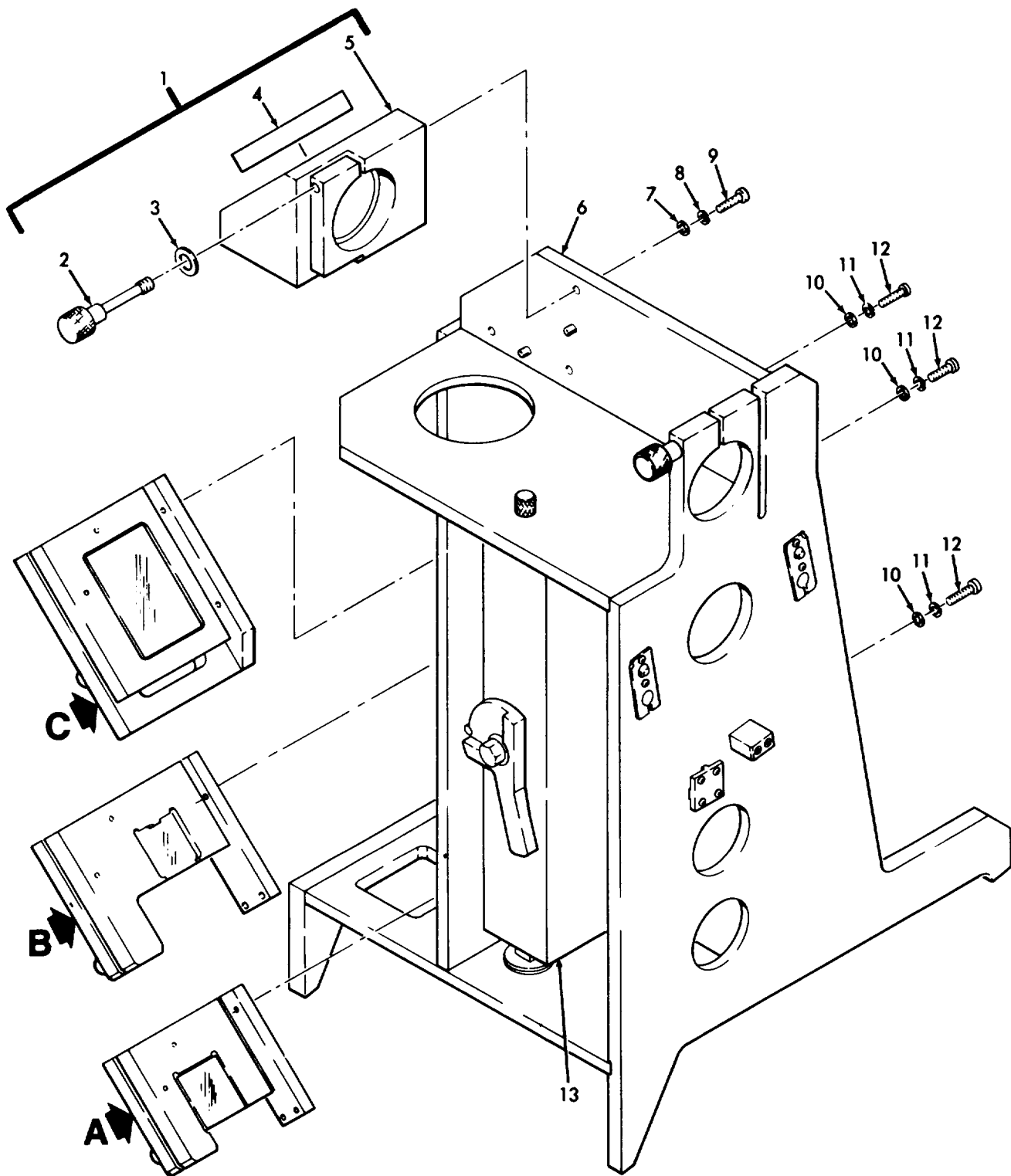
MS 570237

Figure 2. Test set assembly boresight collimator (SM-D-807623) (Group 0020)



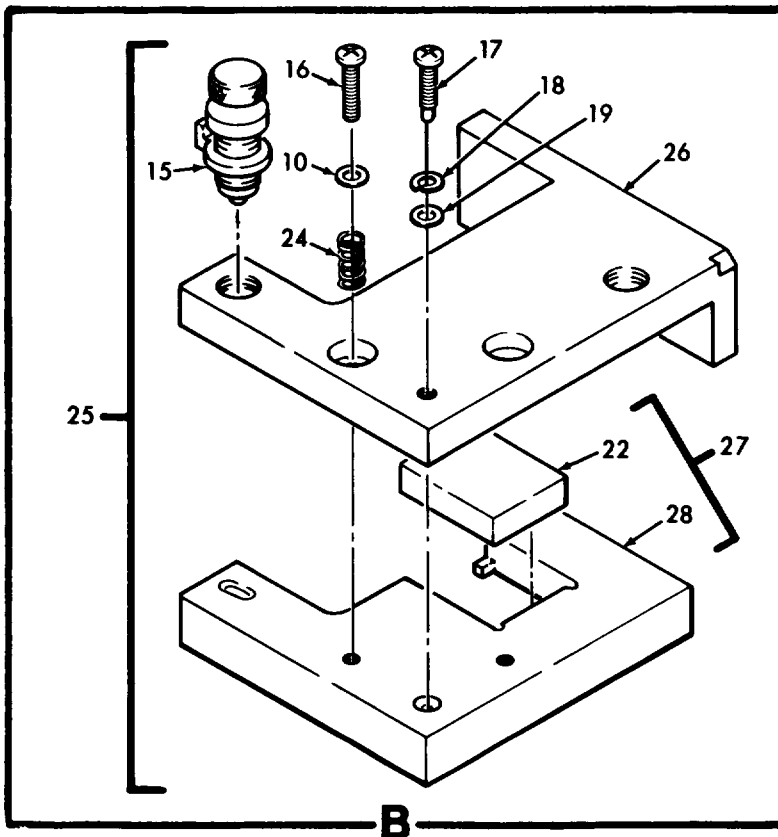
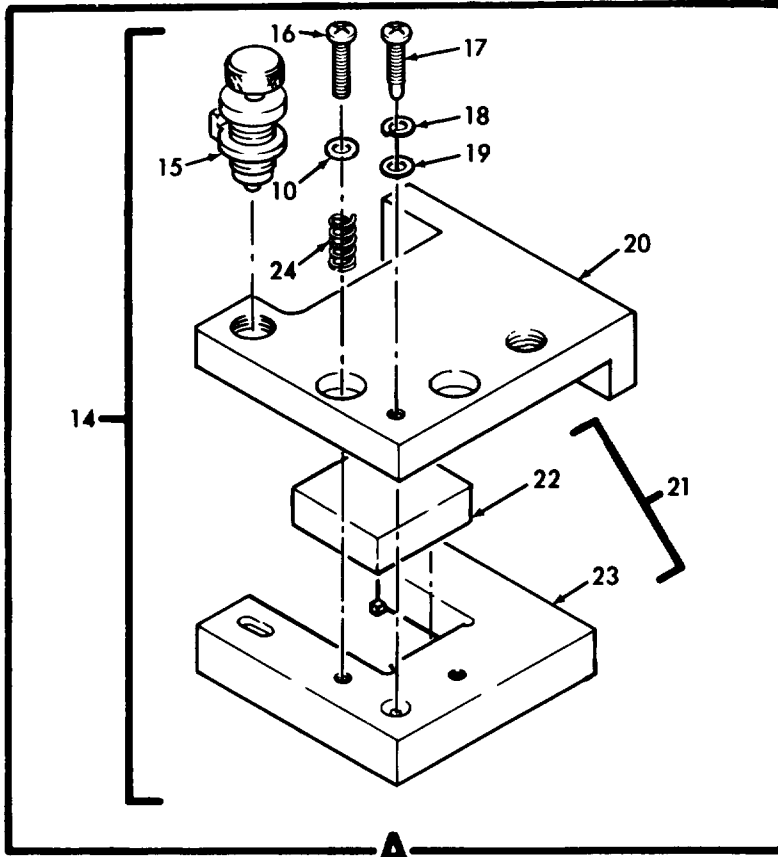
MS 570238

Figure 3. Calibration plate assembly (SM-D-807590) (Group 0040)



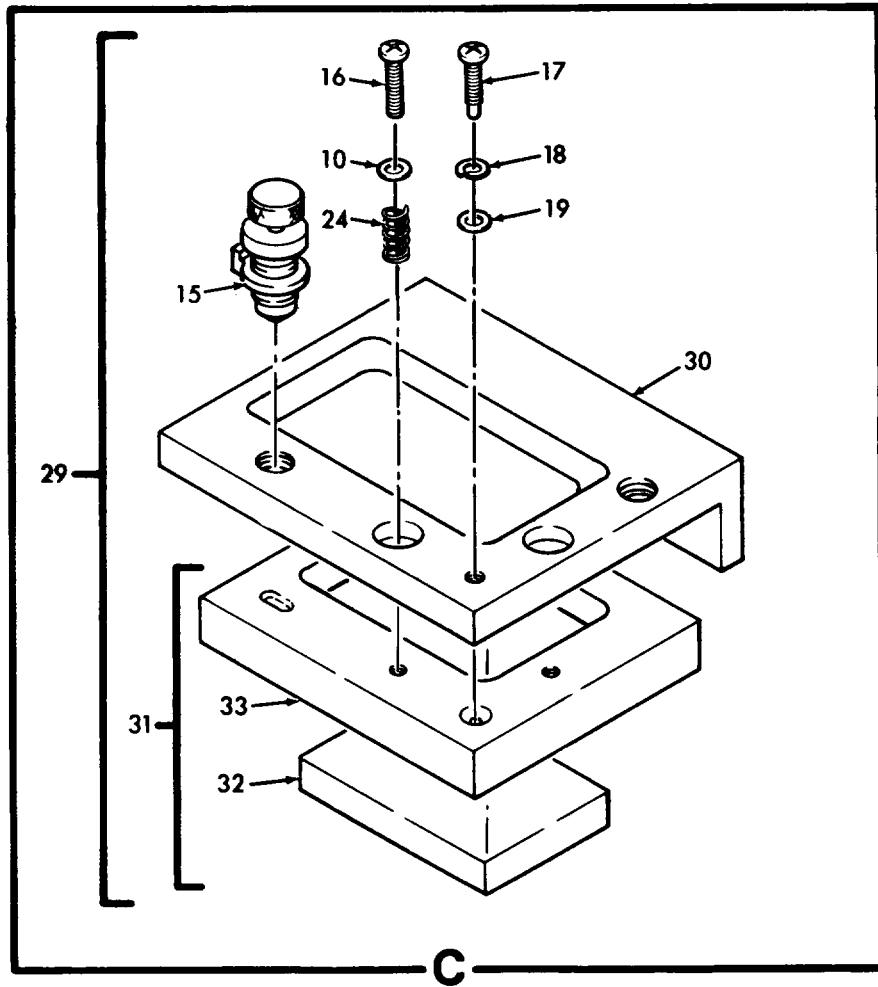
MS 570239

Figure 4. Optics assembly (SM-D-807444) (Group 0060) (Sheet 1 of 3)



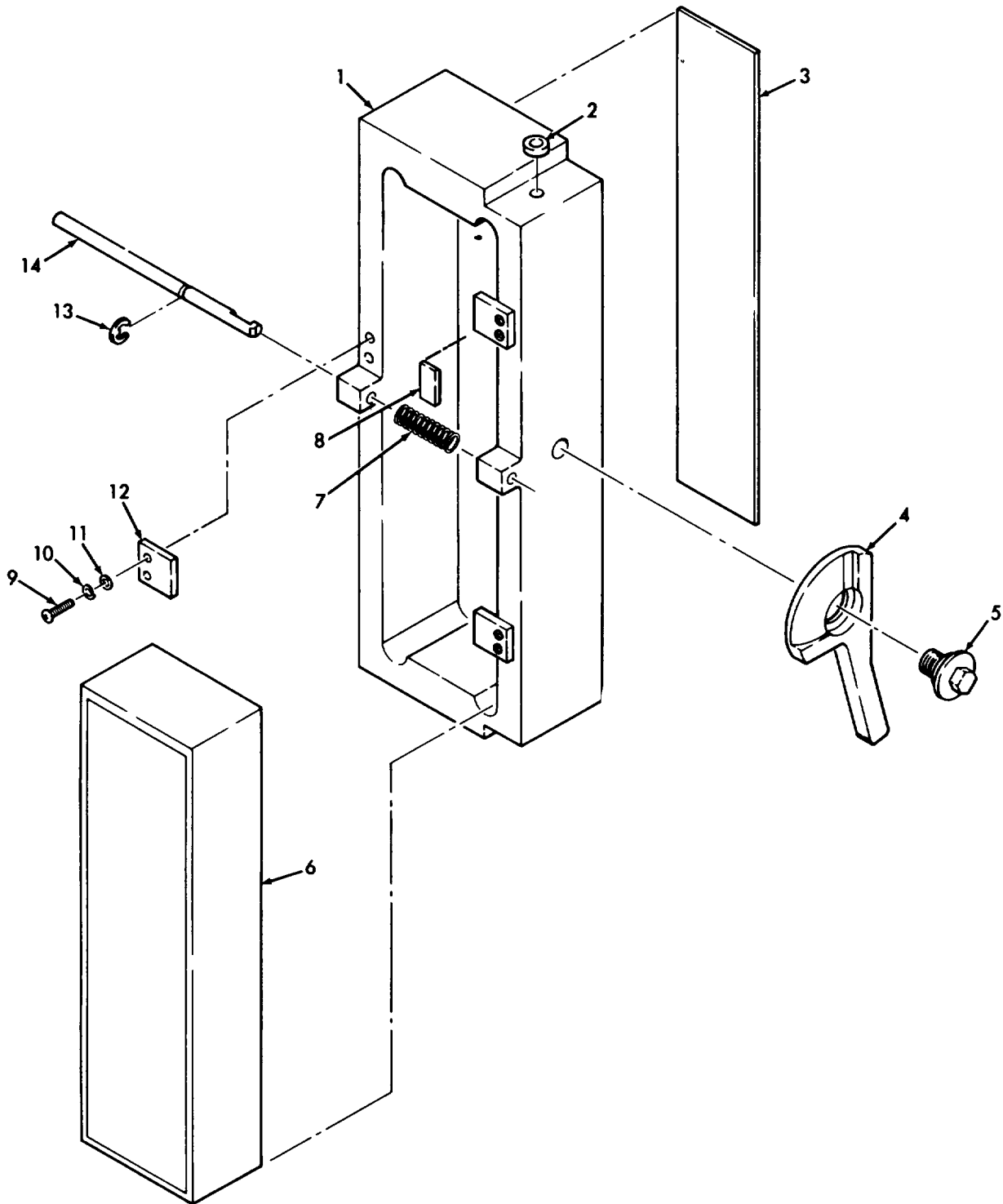
MS 570240

Figure 4. Optics assembly (SM-D-807444)(Group 0060)(Sheet 2 of 3)



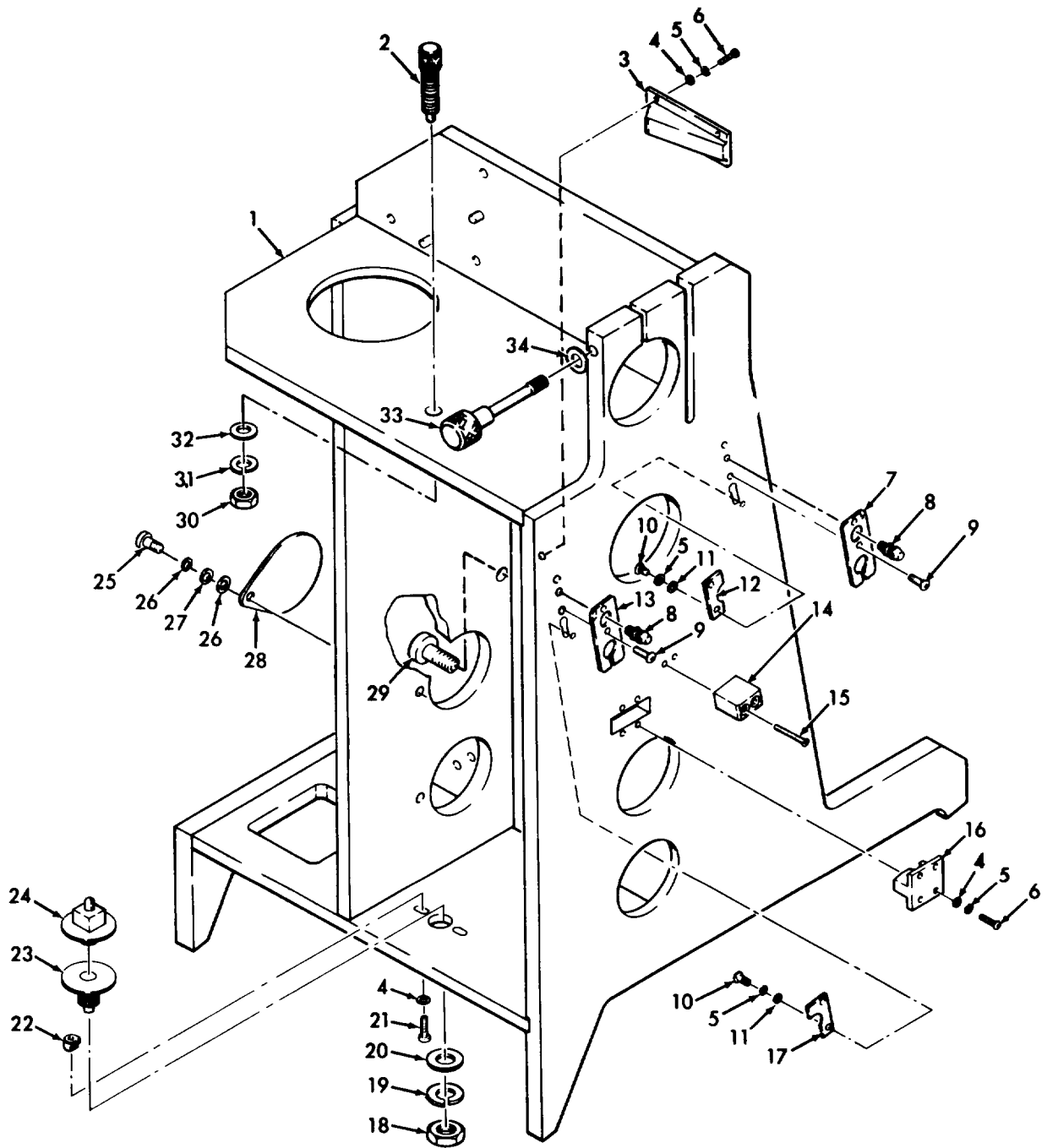
MS 570241

Figure 4. Optics assembly (SM-D-807444) (Group 0060) (Sheet 3 of 3)



MS 570242

Figure 5. Reference mirror assembly (SM-D-807443) (Group 0080)



MS 570243

Figure 6. Fixture assembly (SM-D-807448) (Group 0100)

NATIONAL STOCK NUMBER AND PART NUMBER INDEX

NATIONAL STOCK NUMBER INDEX

STOCK NUMBER	FIG	ITEM	STOCK NUMBER	FIG	ITEM
5305-00-020-0221	3	9	5305-01-147-3196	6	2
5310-00-057-4175	3	6	5855-01-147-3197	4	21
5305-00-145-0887	6	9	5855-01-147-3198	4	23
5305-00-150-3426	4	9	5855-01-147-3199	4	15
5305-00-151-6208	4	16	5305-01-147-3200	4	17
6240-00-155-7856	1	1	5855-01-147-3201	5	12
	2	7	5855-01-147-3202	5	6
5305-00-180-5513	4	12	5855-01-147-3203	5	2
5305-00-182-9459	5	9	5855-01-147-3204	1	5
5310-00-194-3648	4	7	5855-01-147-3260	4	31
5310-00-194-3649	4	3	5855-01-147-3261	4	32
5365-00-205-6552	5	13	5855-01-147-3262	4	27
5310-00-224-0740	4	10	5855-01-149-0890	2	4
5310-00-224-0746	5	10	5855-01-150-9970	6	23
	6	5	5855-01-152-3470	4	4
5310-00-224-0747	4	8	5305-01-161-0345	6	29
5310-00-224-0748	4	11	5306-01-161-0877	4	2
5305-00-242-7275	6	6		6	33
5310-00-243-4764	4	18	5855-01-177-4183	2	5
5310-00-268-6068	6	18	5855-01-178-1129	4	30
5305-00-421-7919	6	21	6250-01-181-3046	2	6
5305-00-455-2512	3	13	5360-01-192-0333	5	7
5305-00-455-2528	6	15	5999-01-195-7571	2	3
5310-00-470-3000	4	19	6650-01-202-0421	2	2
	6	27			
5305-00-494-7333	6	10			
5360-00-574-0092	4	24			
5310-00-595-6057	6	32			
5310-00-687-6664	5	11			
	6	4			
5310-00-764-3919	6	11			
5310-00-767-9425	6	20			
5305-00-823-5840	6	25			
5315-00-926-5864	3	4			
5310-00-933-8778	6	19			
5310-00-984-7042	6	31			
5315-00-988-7409	3	3			
5310-01-010-2383	6	30			
8105-01-071-3659	1	4			
5360-01-096-6680	3	8			
5855-01-118-2206	4	13			
5855-01-118-2208	4	29			
5855-01-118-2209	4	25			
5855-01-118-2210	4	14			
5855-01-118-2211	2	8			
5120-01-141-0029	1	2			
5855-01-147-3191	3	12			
5855-01-147-3192	3	14			
5855-01-147-3194	6	7			
5855-01-147-3195	6	13			

NATIONAL STOCK NUMBER AND PART NUMBER INDEX

PART NUMBER INDEX

FSCM	PART NUMBER	STOCK NUMBER	FIG	ITEM
81350	AN316-C6R	5310-01-010-2383	6	30
88044	AN316C8R	5310-00-268-6068	6	18
83553	C0420-055-0500M	5360-00-574-0092	4	24
96906	MS15795-804B	5310-00-687-6664	5	11
			6	4
96906	MS15795-806B	5310-00-194-3648	4	7
96906	MS15795-807B	5310-00-224-0740	4	10
96906	MS15795-808		6	34
96906	MS15795-808B	5310-00-194-3649	4	3
96906	MS15795-810B	5310-00-470-3000	4	19
			6	27
96906	MS15795-815	5310-00-595-6057	6	32
96906	MS15795-818	5310-00-767-9425	6	20
96906	MS16555-634	5315-00-988-7409	3	3
96906	MS16555-643	5315-00-926-5864	3	4
96906	MS16633-4025	5365-00-205-6552	5	13
96906	MS16995-11B	5305-00-421-7919	6	21
96906	MS35338-135B	5310-00-224-0746	5	10
			6	5
96906	MS35338-136B	5310-00-224-0747	4	8
96906	MS35338-137B	5310-00-224-0748	4	11
96906	MS35338-139B	5310-00-243-4764	4	18
96906	MS35338-141	5310-00-984-7042	6	31
96906	MS35338-143	5310-00-933-8778	6	19
96906	MS51957-13B	5305-00-494-7333	6	10
96906	MS51957-15B	5305-00-242-7275	6	6
96906	MS51957-17B	5305-00-182-9459	5	9
96906	MS51957-33B	5305-00-150-3426	4	9
96906	MS51957-48B	5305-00-180-5513	4	12
96906	MS51957-49B	5305-00-151-6208	4	16
96906	MS51959-12B	5305-00-145-0887	6	9
96906	MS51959-13B	5305-00-455-2512	3	13
96906	MS51959-20B	5305-00-455-2528	6	15
96906	MS51959-22B	5305-00-020-0221	3	9
80205	NAS620C3	5310-00-764-3919	6	11
80063	SM-C-772435-2		3	1
80063	SM-C-772448-7		6	22
80063	SM-C-772474-2		3	5
80063	SM-C-772509		6	17
80063	SM-C-772550		6	12
80063	SM-C-772660-2		6	26
80063	SM-C-772752		3	7
80063	SM-C-772968-13	5305-00-823-5840	6	25
80063	SM-C-773540-21	5360-01-096-6680	3	8
80063	SM-C-773540-44	5360-01-192-0333	5	7
80063	SM-C-804647	5855-01-150-9970	6	23
80063	SM-C-804648	5305-01-147-3196	6	2
80063	SM-C-804662-2	5310-00-057-4175	3	6
80063	SM-C-804737-2	8105-01-071-3659	1	4
80063	SM-C-806793-6		2	9
80063	SM-C-806868		6	8

NATIONAL STOCK NUMBER AND PART NUMBER INDEX

PART NUMBER INDEX

FSCM	PART NUMBER	STOCK NUMBER	FIG	ITEM
80063	SM-C-806870	5855-01-147-3194	6	7
80063	SM-C-806871	5855-01-147-3195	6	13
80063	SM-C-806905-1	6650-01-202-0421	2	2
80063	SM-C-807109-1	5855-01-152-3470	4	4
80063	SM-C-807426		6	24
80063	SM-C-807451		6	14
80063	SM-C-807454	5120-01-141-0029	1	2
80063	SM-C-807455		6	28
80063	SM-C-807461	5305-01-161-0345	6	29
80063	SM-C-807465		5	14
80063	SM-C-807466		5	5
80063	SM-C-807467	5855-01-147-3203	5	2
80063	SM-C-807469		6	3
80063	SM-C-807470		6	16
80063	SM-C-807476		5	4
80063	SM-C-807481	5306-01-161-0877	4	2
			6	33
80063	SM-C-807535	5305-01-147-3200	4	17
80063	SM-C-807541		4	28
80063	SM-C-807547	5855-01-147-3201	5	12
80063	SM-C-807548		5	8
80063	SM-C-807549	5855-01-147-3261	4	32
80063	SM-C-807550	5855-01-147-3198	4	23
80063	SM-C-807552		3	10
80063	SM-C-807589	5855-01-147-3199	4	15
80063	SM-C-807591	5855-01-147-3260	4	31
80063	SM-C-807592	5855-01-147-3262	4	27
80063	SM-C-807593	5855-01-147-3197	4	21
80063	SM-C-807636		5	3
80063	SM-C-808745	5855-01-147-3191	3	12
80063	SM-C-808746	5855-01-147-3192	3	14
80063	SM-C-808825	6240-00-155-7856	1	1
			2	7
80063	SM-C-808826	5999-01-195-7571	2	3
80063	SM-C-808837	5855-01-177-4183	2	5
80063	SM-C-808838-1	6250-01-181-3046	2	6
80063	SM-C-969101	5855-01-149-0890	2	4
80063	SM-D-806867		3	2
80063	SM-D-807440		5	1
80063	SM-D-807442	5855-01-147-3202	5	6
80063	SM-D-807443	5855-01-118-2206	4	13
80063	SM-D-807444		2	1
80063	SM-D-807448		4	6
80063	SM-D-807468		4	5
80063	SM-D-807478-1		4	1
80063	SM-D-807540		4	20
80063	SM-D-807542		4	22
80063	SM-D-807543	5855-01-178-1129	4	30
80063	SM-D-807544		4	26
80063	SM-D-807545		4	33
80063	SM-D-807546		3	11

NATIONAL STOCK NUMBER AND PART NUMBER INDEX

PART NUMBER INDEX

FSCM	PART NUMBER	STOCK NUMBER	FIG	ITEM
80063	SM-D-807584		6	1
80063	SM-D-807586	5855-01-118-2208	4	29
80063	SM-D-807587	5855-01-118-2209	4	25
80063	SM-D-807588	5855-01-118-2210	4	14
80063	SM-D-807590	5855-01-118-2211	2	8
80063	SM-D-807608-1	5855-01-147-3204	1	5
80063	SM-D-807623		1	3

By Order of the Secretary of the Army:

JOHN A. WICKHAM, JR.
General, United States Army
Chief of Staff

Official:

MILDRED E. HEDBERG
Brigadier General, United States Army
The Adjutant General

Distribution:

To be distributed in accordance with DA Form 12-32, Organizational, Direct Support, and General Support Maintenance requirements for TS-3784/TAS Boresight Collimator Test Set (Thermal Imagery).

